

SealCore Safety Plate

Technical Datasheet

Product Description

SealCore Safety Plate is a self-contained, two part device and is designed to safely and reliably seal core holes in fire rated concrete floors for up to 4 hour UL fire ratings. The plate can be installed with just one person and can be done in just minutes. The innovative intumescent filled plate and fire rated foam filler provides the needed thermal barrier to re-rate the floor assembly when abandoned or drilled holes exist. When exposed to temperatures exceeding 300°F (149°C) the intumescent based material begins to expand (intumesce) rapidly to fill the inner cavity. This along with the fire rated foam provide the necessary thermal insulation needed to give the desired fire rating for up to 4 hours. The device is adjustable and can be adapted to fit larger concrete floors up to 12" (30.5 cm) thick. The plate forms a flat secure surface, over the hole, allowing for a weight bearing seal where heavy traffic might be present. It also allows for a flat surface where the installation of carpet and carpet padding is needed.

Features

- **Easy installation saves on labor cost**
- **Firestopping medium unaffected by moisture**
- **Suitable for concrete slabs 3" (7.6 cm) to 12" (30.5 cm) thick**
- **Creates a flat surface, no kick hazard**
- **Can be covered with carpet and padding**
- **Can easily be removed when the hole is needed**
- **Steel construction**
- **Top side only installation**
- **UL Classified, complies with building codes**

Testing and Performance Data

Tested in accordance with ASTM E814, UL1479
UL Classified 1, 2, 3 & 4 Hour Ratings



SealCore Safety Plate

Technical Datasheet

Physical Properties

Nominal Size	Plate Diameter	Adapter Rod Length
3" thru 6" (7.6 to 15.2 cm)	Up to 7" (17.8 cm)	14" (35.6 cm)

Specifications

Installations to be in strict accordance with the manufacturer's printed instructions and shall be in accordance with ASTM E814 (UL1479) and classified by Underwriter Laboratories Inc. as a Through-Penetration Firestop for 1, 2, 3 and 4 Hour Rating.

Applications

The Sealcore Safety Plate is used to seal pre-drilled holes in fire rated concrete floors and are suitable for most concrete floor construction. Care must be taken when using on hollow-core or pre-stressed type concrete floors, call for information.

Stock Sizes

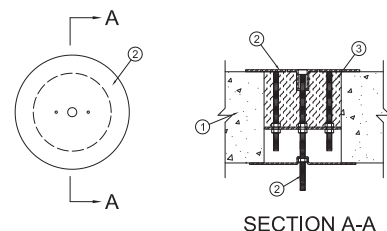
Code	Description
5314	3" (7.6 cm) Sealcore Device
6414	4" (10.2 cm) Sealcore Device
7514	5" (12.7 cm) Sealcore Device
7614	6" (15.3 cm) Sealcore Device

All stock sizes accommodate 3" (7.6 cm) to 12" (30.5 cm) slab thickness

- Customs Sizes Available -

Installation Method

- 1) Clean the hole of all loose material and fill any gaps or cracks.
- 2) Remove all the contents from packing box.
- 3) Hold device vertically and insert into hole. The slide wing is design to teeter so that it will slide down through the opening. Once below the slab, the slide wing will level itself out.
- 4) Holding the device by the top plate, lift upwards so that slight pressure will bring the slide wing tight to the bottom of the slab.
- 5) With either a cordless drill or manually, insert the allen wrench into the allen head bolt and begin turning. This will slowly lower the upper portion of the device into the opening. Keep pressure on the slide wing so it will not spin freely.
- 6) Once the top plate is snug to the top of the slab, remove the allen wrench. Care must be taken not to trap fingers between the plate and the floor assembly.
- 7) Shake the can of fire retardant foam for at least 30 seconds.
- 8) Invert the can and insert the nozzle into one of the two holes in the top plate. Push the nozzle as far into the cavity as possible.
- 9) Spray the foam into the hole and gradually pull the nozzle out until the foam is overflowing the second hole on the top plate. This will make sure no air voids form in the foam.
- 10) Remove spray nozzle from hole in top plate.
- 11) Allow time for the foam to cure and either cut or just leave the excess foam to wear off.



1. 4-1/2" CONCRETE FLOOR ASSEMBLY.
2. CONCRETE SEAL CORE ASSEMBLY.
3. FP 200 EXPANDING FOAM.